

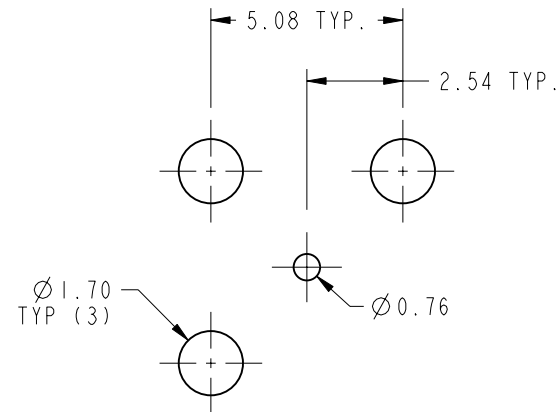
NOTES:

1. MATERIALS AND FINISHES:
 BODY - BRASS, GOLD PLATING.
 CONTACT - BeCu, GOLD PLATING.
 INSULATOR - PTFE
2. ELECTRICAL:
 A. IMPEDANCE: 75 OHM
 B. FREQUENCY RANGE: DC -4.5 GHz
 C. DIELECTRIC WITHSTANDING VOLTAGE: 1000 VRMS, MIN.
 D. INSULATION RESISTANCE: 10,000 MEGOHMS MIN
 E. VOLTAGE RATING: 335 VRMS
3. MECHANICAL:
 A. DURABILITY: 500 CYCLES MIN.
4. ENVIRONMENTAL:
 A. THERMAL SHOCK PER MIL-STD-202 METHOD 107
 TEST CONDITION B (EXCEPT HIGH TEMP @200°C)
 B. VIBRATION: MIL-STD-202 METHOD 204 TEST CONDITION B
 C. SHOCK: MIL-STD-202 METHOD 213 TEST CONDITION B
 D. CORROSION: MIL-STD-202 METHOD 101
 TEST CONDITION B 5% SALT SOLUTION
5. PACKAGING:
 A. QUANTITY: SINGLE PACK
 B. MARKING: BAG TO BE MARKED:
 "AMPHENOLRF, 34-1021 DATE CODE"

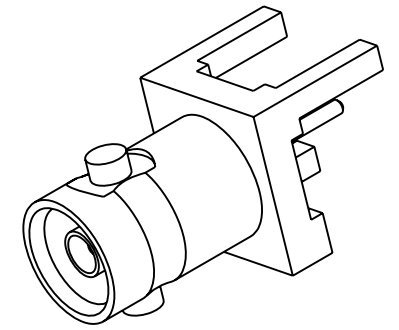
THIRD ANGLE PROJ.

REVISIONS

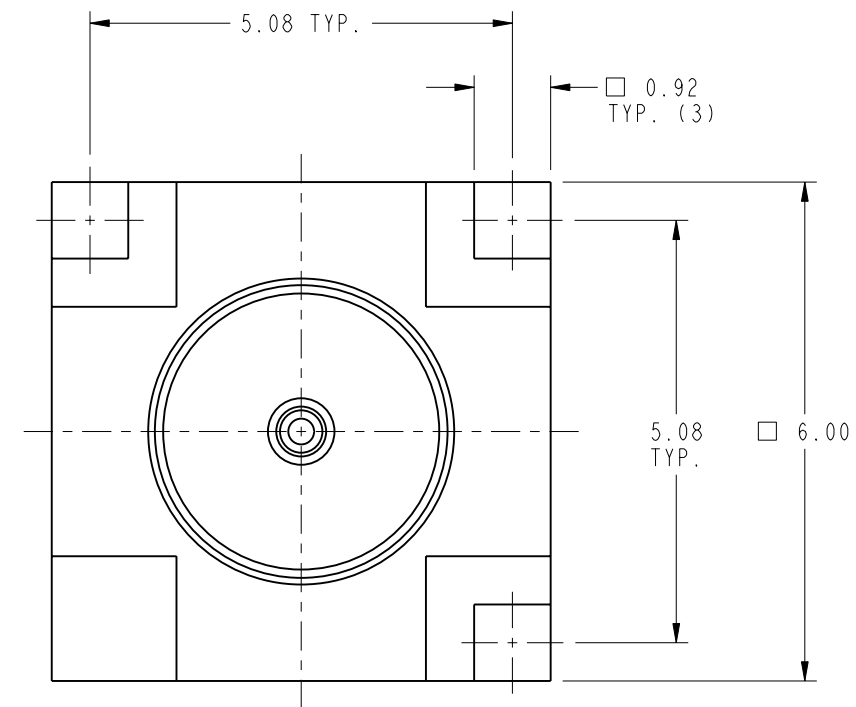
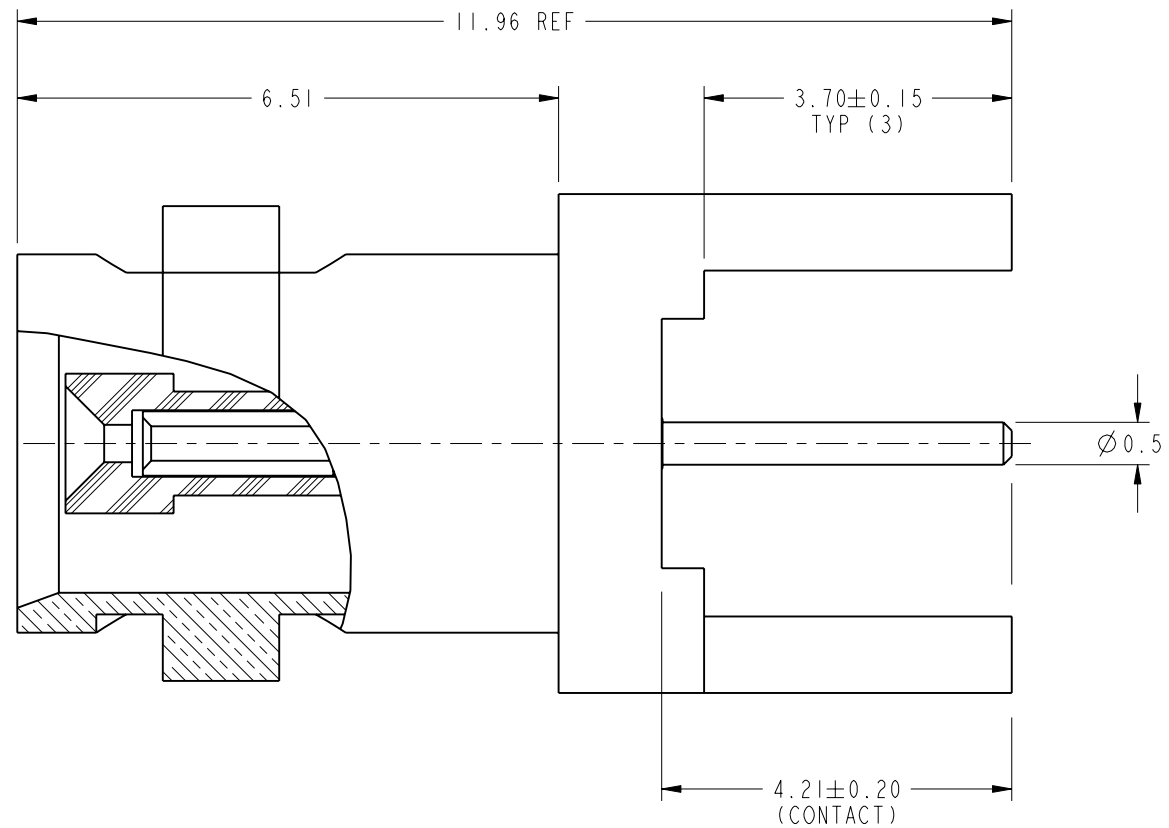
| REV | DESCRIPTION | DATE | ECO | APPR |
|-----|-----------------|-----------|-------|------|
| A | RELEASE TO MFG. | 25-May-10 | 48095 | SH |



SCALE 5.000
RECOMMENDED PCB MOUNTING
HOLES DIMENSIONS



SCALE 4.000



CUSTOMER OUTLINE DRAWING

ALL OTHER SHEETS ARE FOR INTERNAL USE ONLY

UNLESS OTHERWISE SPECIFIED, DIMENSIONS ARE IN METRIC AND TOLERANCES ARE:
 <0.5mm ±0.05mm 0.5 - 6mm ±0.1mm 6 - 30mm ±0.2mm 30 - 120mm ±0.3mm ANGLES ±1°

NOTICE - These drawings, specifications, or other data (1) are, and remain the property of Amphenol corp. (2) must be returned upon request; and (3) are confidential and not to be disclosed to any person other than those to whom they are given by Amphenol Corp. the furnishing of these drawings, specifications, or other data by Amphenol Corp., or to any other person to anyone for any purpose is not to be regarded by implication or otherwise in any manner licensing, granting rights to permitting such holder or any other sperson to manufacture, use or sell any product, process or design, patented or otherwise, that may in any way be related to or disclosed by said drawings, specifications, or other data.

| | | | | | | |
|--------------------------------|----------------------------|-------------------|---|-----------------|--|--|
| MATERIAL SEE NOTES | DRAWN S.LI | DATE 13-May-10 | TITLE HD-BNC STR JACK PCB THROUGH HOLE 3 LEGS RECEPTACLE | | Amphenol RF Danbury CT USA, Tainan, Taiwan, Shenzhen, China www.amphenolrf.com | |
| REFERENCE EAR #3965 | ENGINEER PADMANABHAN E | DATE 10-Mar-10 | | | | |
| CONFIGURATION LEVEL: Prototype | APPROVED S.HSIEH | DATE 14-May-10 | SCALE: 11.0:1.0 | SHEET 2 OF 4 | DRAWING NO.34-1021 | |
| FINISH | Root Folder/HD-BNC/34-1021 | DWG SIZE B | REV A | ITEM NO.34-1021 | | |
| | | | | PART NO.34-1021 | | |

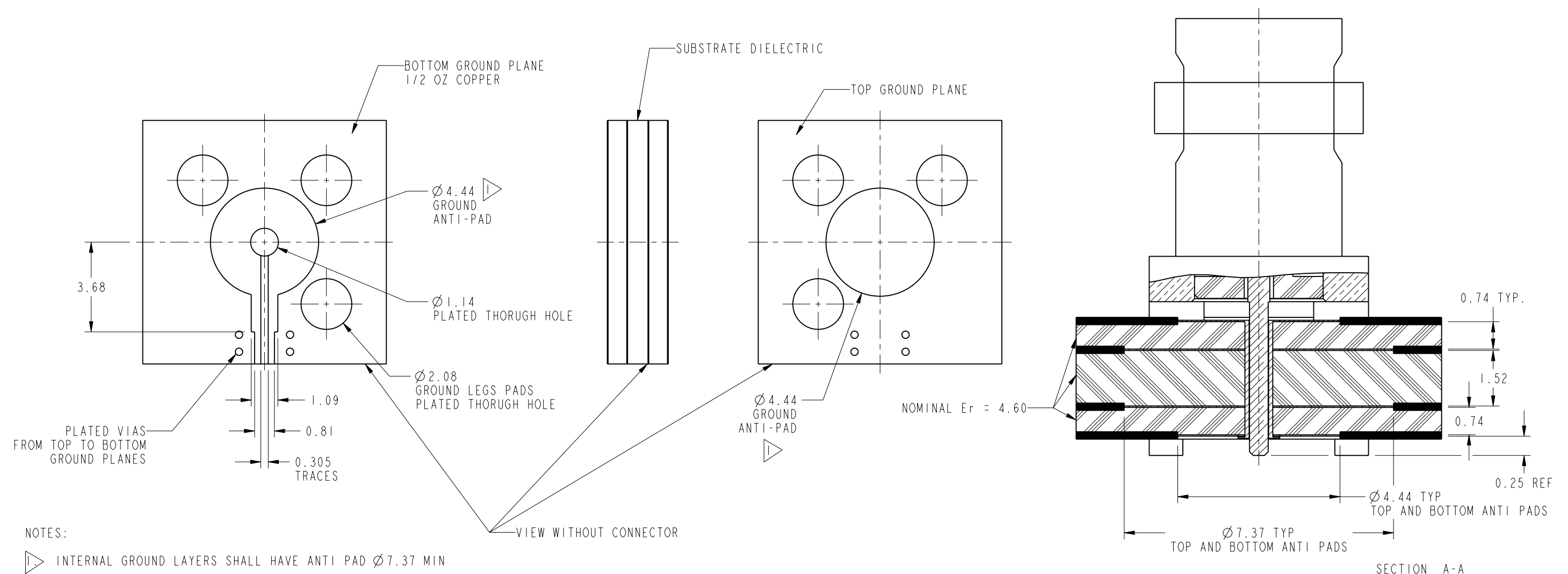
THIRD ANGLE PROJ.

REVISIONS

| REV | DESCRIPTION | DATE | ECO | APPR |
|-----|-----------------|-----------|-------|------|
| A | RELEASE TO MFG. | 25-May-10 | 48095 | SH |

RECOMMENDED PCB LAUNCH FOR OPTIMAL RF PERFORMANCE

VARIATIONS IN BOARD SUBSTRATE AND TRACE MAY REQUIRE DIFFERENT GEOMETRY



NOTES:

INTERNAL GROUND LAYERS SHALL HAVE ANTI PAD Ø 7.37 MIN

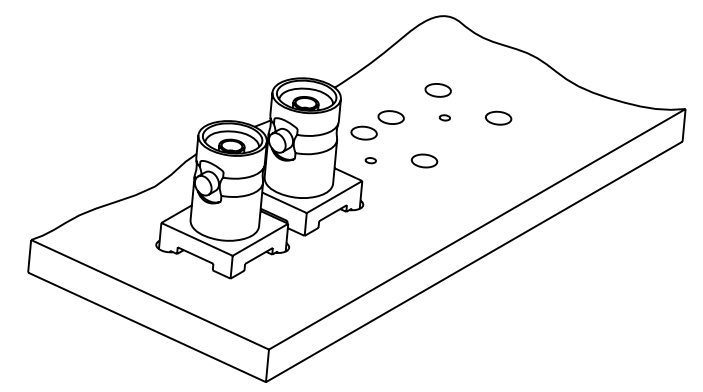
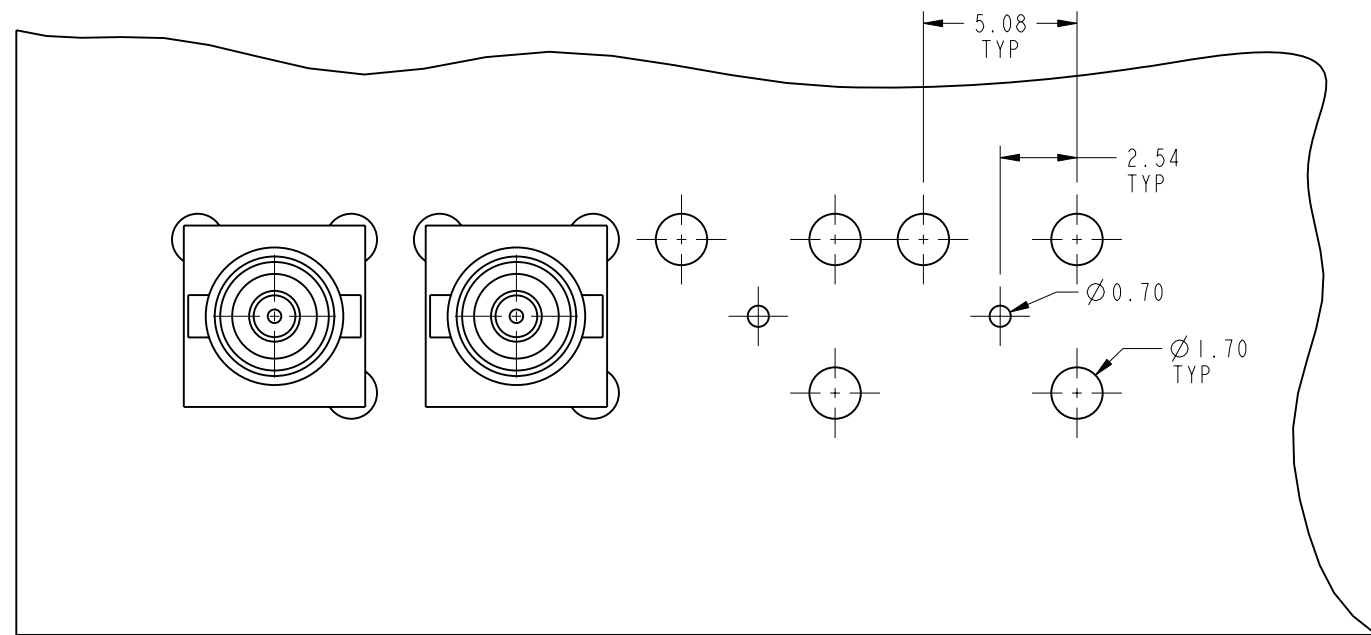
| | | | | | | | | | | | | | | | | | |
|--|--------------------------------|----------------------------|-----------|----------------|----------|---------------------|---------|---------|---------|------|----------|-------|------|---|--|--|--|
| <p>UNLESS OTHERWISE SPECIFIED, DIMENSIONS ARE IN METRIC AND TOLERANCES ARE:</p> <table border="1"> <tr> <td>< 0.5mm</td> <td>0.5 - 6mm</td> <td>6 - 30mm</td> <td>30 - 120mm</td> <td>ANGLES</td> </tr> <tr> <td>± 0.05mm</td> <td>± 0.1mm</td> <td>± 0.2mm</td> <td>± 0.3mm</td> <td>± 1°</td> </tr> </table> | < 0.5mm | 0.5 - 6mm | 6 - 30mm | 30 - 120mm | ANGLES | ± 0.05mm | ± 0.1mm | ± 0.2mm | ± 0.3mm | ± 1° | MATERIAL | DRAWN | DATE | <p>TITLE</p> <p>HD-BNC, STR JACK PCB THROUGH HOLE 3 LEGS RECEPTACLE</p> | | <p>Amphenol RF</p> <p>Danbury CT USA, Tainan, Taiwan, Shenzhen, China</p> <p>www.amphenolrf.com</p> | |
| | < 0.5mm | 0.5 - 6mm | 6 - 30mm | 30 - 120mm | ANGLES | | | | | | | | | | | | |
| ± 0.05mm | ± 0.1mm | ± 0.2mm | ± 0.3mm | ± 1° | | | | | | | | | | | | | |
| -- | S.LI | 13-May-10 | | | | | | | | | | | | | | | |
| <p>NOTICE - These drawings, specifications, or other data (1) are, and remain the property of Amphenol corp. (2) must be returned upon request; and (3) are confidential and not to be disclosed to any person other than those to whom they are given by Amphenol Corp. the furnishing of these drawings, specifications, or other data by Amphenol Corp., or to any other person to anyone for any purpose is not to be regarded by implication or otherwise in any manner licensing, granting rights to permitting such holder or any other person to manufacture, use or sell any product, process or design, patented or otherwise, that may in any way be related to or disclosed by said drawings, specifications, or other data.</p> | REFERENCE | ENGINEER | DATE | SCALE: 1.0:1.0 | | SHEET 3 OF 4 | | | | | | | | | | | |
| | EAR #3965 | PADMANABHAN E | 10-Mar-10 | | | | | | | | | | | | | | |
| | CONFIGURATION LEVEL: Prototype | APPROVED | S.HSIEH | DATE | DWG SIZE | | REV | | | | | | | | | | |
| FINISH | | Root Folder/HD-BNC/34-1021 | 14-May-10 | B | | A | | | | | | | | | | | |
| | | | | | | DRAWING NO. 34-1021 | | | | | | | | | | | |
| | | | | | | ITEM NO. 34-1021 | | | | | | | | | | | |
| | | | | | | PART NO. 34-1021 | | | | | | | | | | | |

THIRD ANGLE PROJ.

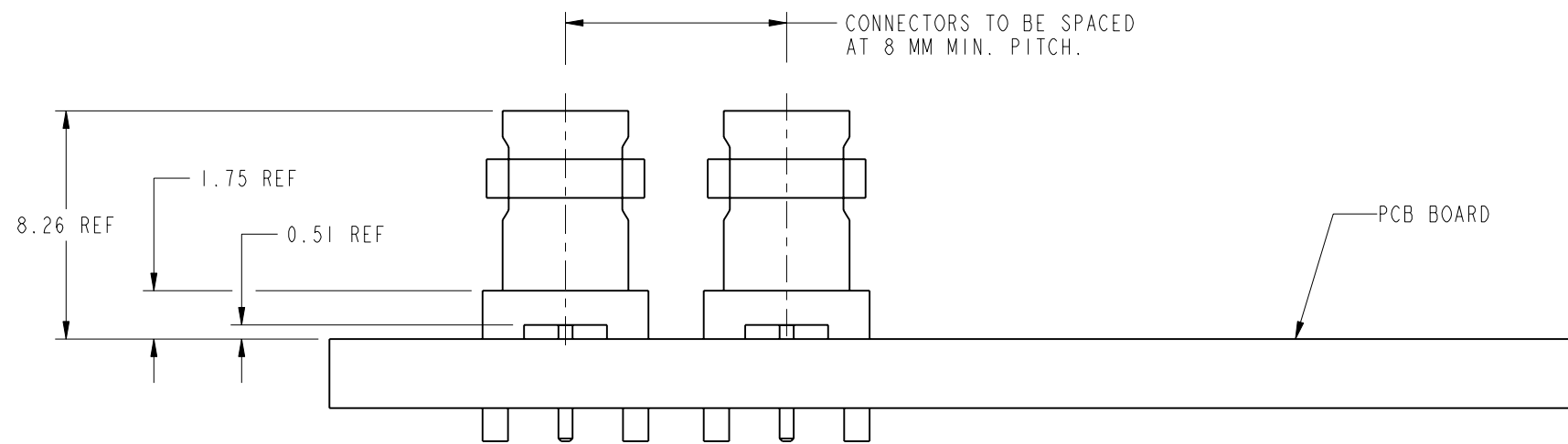
REVISIONS

| REV | DESCRIPTION | DATE | ECO | APPR |
|-----|-----------------|-----------|-------|------|
| A | RELEASE TO MFG. | 25-May-10 | 48095 | SH |

CUSTOMER OUTLINE DRAWING
ALL OTHER SHEETS ARE FOR INTERNAL USE ONLY



SCALE 2.000



RECOMMENDED PCB MOUNTING HOLES

| | | | | | | |
|---|---------------------------------------|-----------------------------------|---------------------------|--|--|---|
| <p>UNLESS OTHERWISE SPECIFIED, DIMENSIONS ARE IN METRIC AND TOLERANCES ARE: <0.5mm ± 0.05mm 0.5 - 6mm ± 0.1mm 6 - 30mm ± 0.2mm 30 - 120mm ± 0.3mm ANGLES ± 1°</p> <p>NOTICE - These drawings, specifications, or other data (1) are, and remain the property of Amphenol corp. (2) must be returned upon request; and (3) are confidential and not to be disclosed to any person other than those to whom they are given by Amphenol Corp. the furnishing of these drawings, specifications, or other data by Amphenol Corp., or to any other person to anyone for any purpose is not to be regarded by implication or otherwise in any manner licensing, granting rights to permitting such holder or any other sperson to manufacture, use or sell any product, process or design, patented or otherwise, that may in any way be related to or disclosed by said drawings, specifications, or other data.</p> | <p>MATERIAL --</p> | <p>DRAWN S.LI</p> | <p>DATE 13-May-10</p> | <p>TITLE HD-BNC, STR JACK PCB THROUGH HOLE 3 LEGS RECEPTACLE</p> | <p>Amphenol RF Danbury CT USA, Tainan, Taiwan, Shenzhen, China www.amphenolrf.com</p> | |
| | <p>REFERENCE EAR #3965</p> | <p>ENGINEER PADMANABHAN E</p> | <p>DATE 10-Mar-10</p> | | | <p>SCALE: 12.0:1.0 SHEET 4 OF 4</p> |
| | <p>CONFIGURATION LEVEL: Prototype</p> | <p>APPROVED S.HSIEH</p> | <p>DATE 14-May-10</p> | <p>DWG SIZE B</p> | <p>REV A</p> | <p>DRAWING NO. 34-1021</p> |
| | <p>FINISH</p> | <p>Root Folder/HD-BNC/34-1021</p> | | | | <p>ITEM NO. 34-1021</p> <p>PART NO. 34-1021</p> |